

CHRISTMAS CATALOGUE 2010

BOXED CHRISTMAS CARDS
DIARIES
GIFT BAGS
GIFT BOXES
CALENDARS



FLAME TREE
PUBLISHING

in aid of
CANCER RESEARCH UK
Together we will beat cancer



CONTENTS

CHARITY BOXED CHRISTMAS CARDS 1-4
CHRISTMAS GIFT PACKAGING 4-5
2011 CALENDARS AND DIARIES 6-11
GIFT BOX SETS 12
REPRESENTATION & DISTRIBUTION 13



IMAGE CREDITS

© Sioux 2010 – reproduced courtesy of Eaglecrown

Fairyland © Jean & Ron Henry 2010

Forest Fairies © Beverlie Manson 2010

Erté © Sevenarts Ltd 2010

IVORY CATS™ © Lesley Anne Ivory 2010
Licensed by Copyrights Group

Mucha produced by Flame Tree Publishing under license granted by Mucha Ltd © Mucha Trust 2010



TERMS & CONDITIONS 2010

1. First orders will be supplied strictly on a pro-forma basis.
2. Accounts on 30-day credit terms may be opened on provision of two satisfactory trade and one bank reference. Flame Tree reserves the right to withdraw credit facilities in the event of any failure by the purchaser to adhere to the agreed terms of payment.
3. If any payment due by the purchaser to Flame Tree is not made in accordance with these terms and conditions, Flame Tree may charge interest on the overdue amount at 2% pa, above the Bank of England base rate.
4. Orders over £175 (excluding VAT) will be dispatched carriage free within the UK. Orders under £175 (excluding VAT) will incur carriage costs of £7.50, which will be added to the invoice.
5. Every effort is made to deliver within 14 days of receipt of order.
6. Any claim arising from shortages or damages must be made within 7 days of receipt.
7. Unless otherwise agreed, credit terms on all accounts will be 30 days.
8. It is a condition of sale that legal title to the goods does not pass to the purchaser until payment of all monies owing has been received in full.
9. Goods are not supplied on Sale or Return basis unless a separate written agreement is in force.
10. In the case of the purchaser going into receivership or administration, Flame Tree shall be entitled to cancel any sales of goods, the debt for which will be immediately due and payable, and to seize any unpaid-for goods.
11. These terms and conditions apply to all sales and will prevail over any different terms and conditions issued by the Purchaser, except where otherwise agreed in writing.
12. Please make cheques payable to FLAME TREE PUBLISHING at Crabtree Hall, Crabtree Lane, Fulham, London SW6 6TY, United Kingdom.

CHARITY BOXED CHRISTMAS CARDS

SPECIFICATION

Christmas boxed cards

12 flittered cards with envelopes
 Size: 103mm x 138mm x 40mm (deep)



CHBX 72 *Just a line for Christmas*



CHBX 73 *Christmas Bells*



CHBX 74 *Christmas Owls*



CHBX 75 *Queen of the Night*



CHBX 77 *Christmas Greetings*



CHBX 76 *Putti*



CHBX 07 *The Angel*



CHBX 68 *Aladin, 1928*



CHBX 65 *White Christmas*



CHBX 09 *Entrance of Santa Claus*



CHBX 67 *Starstruck*



CHBX 64 *Christmas Expectation*

CHARITY BOXED CHRISTMAS CARDS



CHBX 03 *Bauble Tree*



CHBX 23 *Santa and the Moon*



CHBX 49 *The New Picture Book*



CHBX 50 *Christmas Eve – A Dream*



CHBX 51 *'Gion Shimu in Snow'*



CHBX 52 *Over the Rooftops*



CHBX 53 *Letter to Santa*



CHBX 55 *Baby's Ride*



CHBX 56 *Snowy Santa Claus*



CHBX 57 *A Bright & Happy Christmas*



CHBX 58 *Santa at the Fireplace*



CHBX 59 *A Glowing Sunset*



CHBX 63 *Holy Star*



CHBX 60 *Angels*



CHBX 62 *Christmas Roses*



CHBX 61 *Santa's Sleigh*



CHBX 46 *Winter Wonderland*



CHBX 33 *"I Saw Three Ships..."*



CHBX 36 *Little Town of Bethlehem*



CHBX 35 *Snowman & Robins*



CHBX 45 *Christmas Robin*



CHBX 32 *Turtle Dove Tree*



CHBX 08 *Est-elle aussi en porte bonheur*



CHBX 26 *The Snowman*



CHBX 27 *Costume for Santa*



CHBX 28 *Fedora Fur*



CHBX 30 *Christmas Gouache*



CHBX 25 *Christmas, 1930*

LIMITED STOCK



CHBX 24 *The Snowman*

LIMITED STOCK



CHBX 06 *Christmas Star*

LIMITED STOCK



CHBX 37 *Octopussy and the Christmas star*

LIMITED STOCK



CHBX 12 *Fairy Snowman*

LIMITED STOCK



CHBX 39 *Hark the Herald Angels Sing*



CHBX 04 *Christmas Tree*



CHBX 31 *Christmas Candle*



CHBX 14 *Christmas Kiss*



CHBX 66 *Christmas Eve*



CHRISTMAS GIFT BAGS

SPECIFICATION

Flittered • Colour rope handle

Available in 3 sizes
 small: 140mm x 114mm
 medium: 165mm x 216mm
 large: 245mm x 203mm
 Sold in packs of 5



GBXL 09 *Sleeping Beauty Gift Bag (large)*
 GBXM 09 *Sleeping Beauty Gift Bag (medium)*



GBXL 12 *Santa and the Moon (large)*
 GBXM 12 *Santa and the Moon (medium)*
 GBXS 12 *Santa and the Moon (small)*



GBXL 14 *Christmas Tree (large)*
 GBXS 14 *Christmas Tree (small)*



GBXL 10 *Costume for Santa Gift Bag (large)*
 GBXM 10 *Costume for Santa Gift Bag (medium)*
 GBXS 10 *Costume for Santa Gift Bag (small)*

BOTTLE BAGS

SPECIFICATION

Flittered • Sold in packs of 5
 Rope or organza ribbon handles (Mucha)
 Size: 350mm x 125mm x 85mm



BB 01 Feather Gown



BB 05 Queen of the Night



BB 10 Cowslip, 1899



BB 09 Brightness of Day, 1899



BB 08 Erté Shoes



BB 07 Angel Melody



BB 11 Champagne White Star, 1899



BB 06 Byzantine



GIFT BOOK

A Celebration of Christmas
 978 1 84786 689 9 • **Published**
 HB, 48pp • Tps: 245 x 190 mm
 £7.99 • Carton Quantity: 25

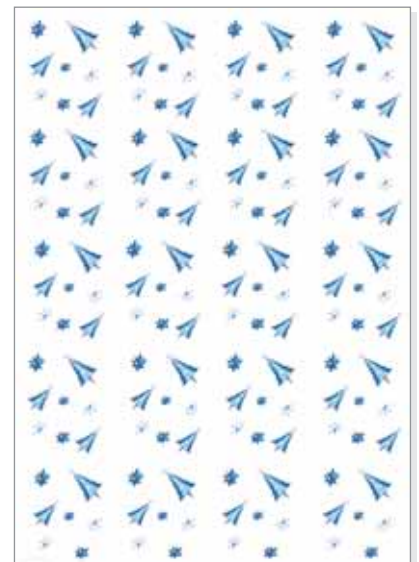


GIFT WRAP & MINI CARD

SPECIFICATION

Sold in packs of 25 • Flittered

Size: 700mm x 500mm



GW 22 Christmas Wrappings Gift Wrap



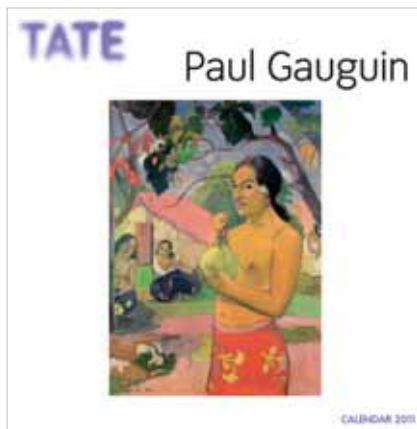
2011 CALENDARS & DIARIES

SPECIFICATION

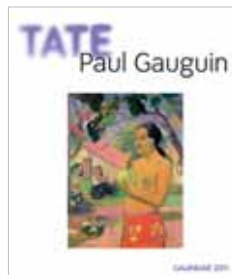
Shrinkwrapped
 Extra large size: 350 mm x 350 mm (13 in x 13 in)
 Large size: 300 mm x 300 mm (12 in x 12 in)
 Small size: 180 mm x 155 mm (8 in x 7 in)
 Slim size: 350 mm x 168 mm (13 in x 6 ½ in)

Diaries

Tate: 96 pp • 210 mm x 148 mm
 RA: 96 pp • 126 mm x 158 mm
 Mucha, Blooms, Ivory Cats, Klimt & Erté
 96 pp • 158 mm x 126 mm



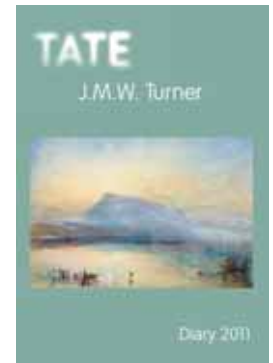
CAL 2011 01
 978 1 84786 734 6
 Tate Gauguin



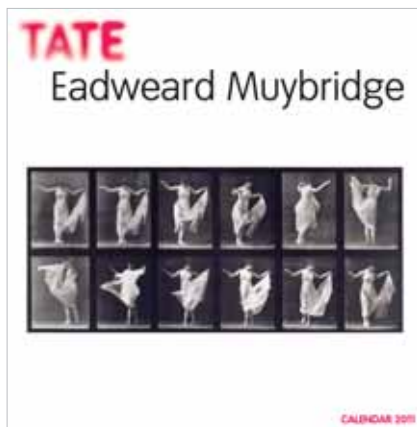
CAL 2011 SM 01
 978 1 84786 772 8
 Tate Gauguin



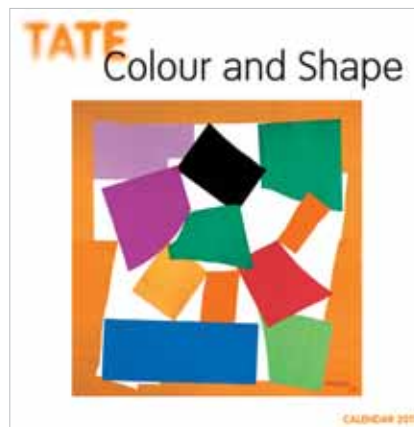
CAL 2011 SM 02
 978 1 84786 773 5
 Tate J.M.W. Turner



DIA 11 04
 978 1 84786 780 3
 Tate J.M.W. Turner Diary



CAL 2011 03
 978 1 84786 736 0
 Tate Eadweard Muybridge



CAL 2011 02
 978 1 84786 735 3
 Tate Colour & Shape



CAL 2011 04
 978 1 84786 737 7
 Tate J.M.W. Turner



CAL 2011 05
978 1 84786 738 4
Tate Land Art



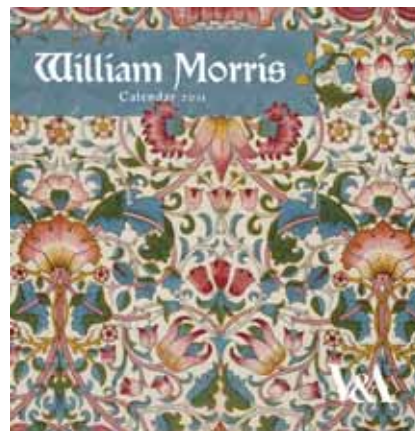
CAL 2011 06
978 1 84786 739 1
Tate The Art of Flowers



DIA 11 05
978 1 84786 781 0
Tate The Art of Flowers Diary



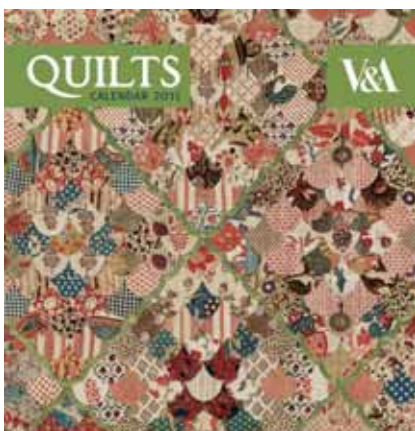
CAL 2011 07
978 1 84786 740 7
V&A John French Photography



CAL 2011 09
978 1 84786 742 1
V&A William Morris



DIA 11 09
978 1 84786 785 8
V&A William Morris Diary



CAL 2011 10
978 1 84786 743 8
V&A Quilts



CAL 2011 11
978 1 84786 744 5
Royal Academy of Arts



DIA 11 01
978 1 84786 777 3
Royal Academy of Arts Diary

RIBA  Trust

science 
museum



CAL 2011 12
978 1 84786 745 2
RIBA *Railway Stations*



CAL 2011 14
978 1 84786 747 6
Science Museum *Man in Space*



CAL 2011 22
978 1 84786 755 1
Seascapes by Barbara James



CAL 2011 SL 02
978 1 84786 768 1
Erté
(flittered cover)



CAL 2011 SM 04
978 1 84786 774 2
Erté
(flittered cover)



DIA 11 02
978 1 84786 778 0
Erté Diary
(flittered cover)



CAL 2011 15
978 1 84786 748 3
Erté
(flittered cover and inside)



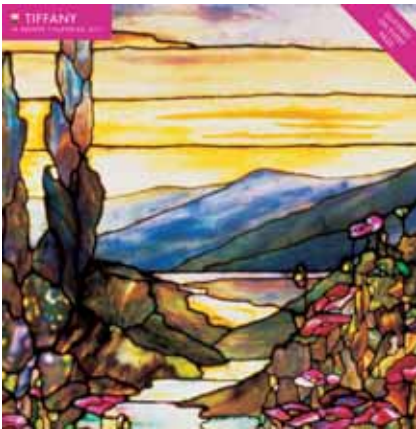
CAL 2011 SM 05
978 1 84786 775 9
Fairyland
(flittered cover)



CAL 2011 SL 04
978 1 84786 770 4
Fairyland
(flittered cover)



CAL 2011 16
978 1 84786 749 0
Fairyland
(flittered cover and inside)



CAL 2011 18
978 1 84786 751 3
Tiffany
(flittered cover and inside)



CAL 2011 19
978 1 84786 752 0
Mucha Extra Large
(flittered cover and inside)



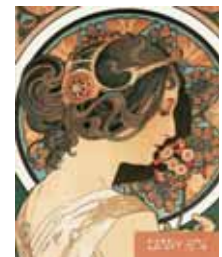
CAL 2011 SL 01
978 1 84786 767 4
Mucha
(flittered cover)



CAL 2011 20
978 1 84786 753 7
Mackintosh
(flittered cover and inside)



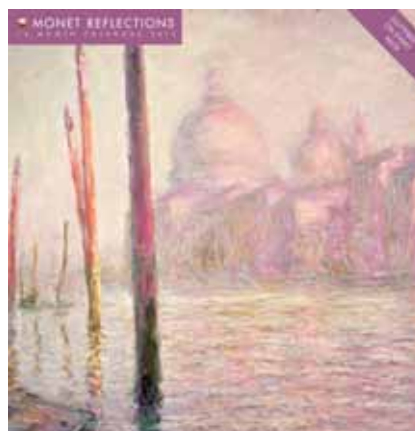
CAL 2011 SM 07
978 1 84786 776 6
Mucha
(flittered cover)



DIA 11 03
978 1 84786 779 7
Mucha Diary
(flittered cover)



CAL 2011 17
978 1 84786 750 6
Forest Fairies
(flittered cover and inside)



CAL 2011 21
978 1 84786 754 4
Monet
(flittered cover and inside)



CAL 2011 23
978 1 84786 756 8
Victorian Art
(flittered cover and inside)

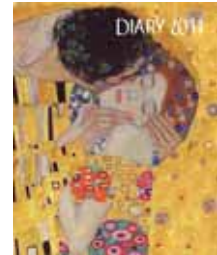
2011 CALENDARS & DIARIES



CAL 2011 24
978 1 84786 757 5
Oriental Flowers
(flittered cover and inside)



CAL 2011 25
978 1 84786 758 2
Gustav Klimt
(flittered cover and inside)



DIA 11 08
978 1 84786 784 1
Gustav Klimt Diary
(flittered cover)



CAL 2011 26
978 1 84786 759 9
Ivory Cats
(flittered cover and inside)



CAL 2011 SL 03
978 1 84786 769 8
Ivory Cats
(flittered cover)



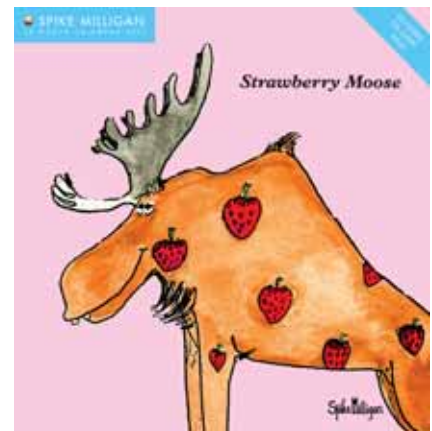
DIA 11 07
978 1 84786 783 4
Ivory Cats Diary
(flittered cover)



CAL 2011 27
978 1 84786 760 5
Blooms by Nel
(flittered cover and inside)



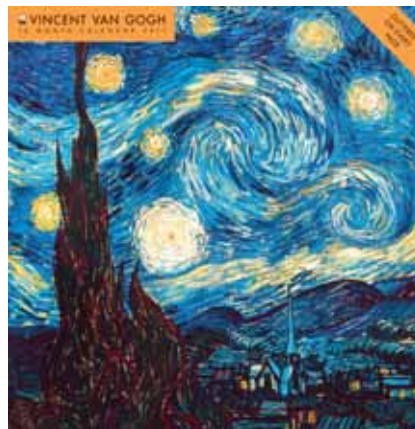
DIA 11 06
978 1 84786 782 7
Blooms by Nel Diary
(flittered cover)



CAL 2011 28
978 1 84786 761 2
Spike Milligan
(flittered cover and inside)



CAL 2011 33
978 1 84786 766 7
Dragon Art



CAL 2011 30
978 1 84786 763 6
Vincent Van Gogh
(flittered cover and inside)



CAL 2011 31
978 1 84786 764 3
Sioux
(flittered cover and inside)



CAL 2011 32
978 1 84786 765 0
John Singer Sargent



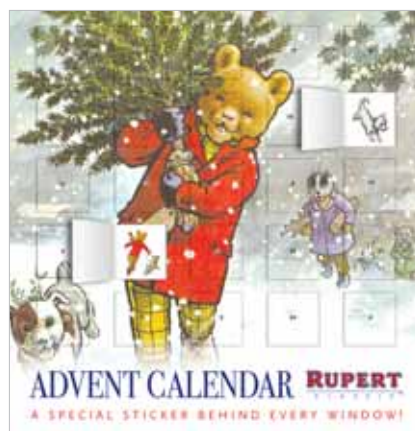
CAL 2011 29
978 1 84786 762 9
Classic Rupert



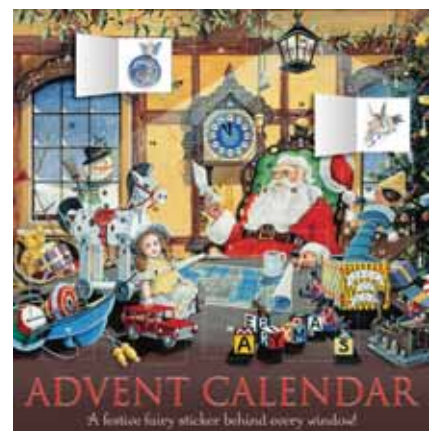
CAL 2011 SL 05
978 1 84786 771 1
Glamour (flittered cover)



CAL 2011 ADV 01
978 1 84786 786 5
Santa's Sleigh Advent
(flittered cover)



CAL 2011 ADV 02
978 1 84786 787 2
Classic Rupert Advent
(flittered cover)



CALAD 09 01
978 1 84786 167 2
Letter to Santa Advent
(flittered cover)



GBOX 03 *Erté* Triangular Gift Box Set



GBOX 11 *Erté* Rectangular Gift Box Set



GBOX 07 *Mucha* Square Gift Box Set



GBOX 12 *Forest Fairies New* Square Gift Box Set



GBOX 13 *Fairyland* Square Gift Box Set

GIFT BOX SETS

SPECIFICATION

Gift box set

Flittered

average size of largest box: 14cm (l) x 11cm (w) x 8cm (d)
 average size of medium box: 11cm (l) x 9cm (w) x 6cm (d)
 average size of small box: 9cm (l) x 7cm (w) x 5cm (d)



GBOX 10 *Klimt* Rectangular Gift Box Set



GBOX 08 *Tiffany* Hexagonal Gift Box Set



GBOX 06 *Forest Fairies* Square Gift Box Set



GBOX 09 *Ivory Cats* Rectangular Gift Box Set

REPRESENTATION AND DISTRIBUTION



FLAME TREE PUBLISHING

Head Office:

Crabtree Hall, Crabtree Lane
Fulham, London, SW6 6TY
☎ +44 (0) 20 7386 4700
☎ +44 (0) 20 7386 4701
Sales: 08454 020 422
www.flametreepublishing.com

Publisher & Creative Director

Nick Wells

Managing Director

Frances Bodiam

Book Trade Sales Director

Chris McLaren
☎ 01285 750212
☎ 07878 374475

Customer Services Manager

Birgitta Williams

Sales Support Manager

Jordi Nolla

Sales & Marketing Assistant

Natalie Whittaker

Email addresses for the above:
[first name]@flametreepublishing.com



For details of our representatives and distributors throughout the rest of the world, please contact Frances Bodiam (frances@flametreepublishing.com) at the above address.

See inside front cover for Terms & Conditions



BOOKS

UK Bookshops should refer to their usual wholesalers for book orders

Book Trade contact

Chris McLaren
☎ 01285 750212
☎ 07878 374475

Book orders will be supplied by Marston Book Services

EXPORT AGENTS (BOOKS)

EASTERN EUROPE

Andrew Durnell
☎ 01892544272
✉ andrew@durnell.co.uk

FAR EAST

SALES EAST
Peter Couzens
☎ +66 2 2581305
✉ peter.couzens@gmail.com

GERMANY

Gabriele Kern
☎ +49 695 10694
✉ gabriele.kern@publisherservices.de

IRELAND

Barr Books
Bridget Barrett
☎ +353872835475
✉ bridget@barrbooks.com

ITALY & GREECE

Penny Padovani
☎ +39 0575 614338
✉ penny@padovanibooks.com

MIDDLE EAST

Peter Ward
☎ 0208 772 3300
✉ richard@pwbookex.com

SCANDINAVIA

Anglo Nordic Books
Peter Barrows
☎ 01483422395
✉ pb@anglonordicbooks.com

SOUTH AFRICA

Peter Matthews Agencies Ltd
Peter Matthews/Gary Matthews
☎ +27118674175
✉ petermatthews@wol.co.za
✉ garymatthews@wol.co.za

SOUTH AMERICA/CARIBBEAN

HRA
Chris Humphrys/Lynda Hopkins
☎ 0208 530 5028
✉ humph4hra@aol.com
✉ humph4hra@gmail.com

SPAIN & PORTUGAL

Jenny Padovani
☎ +34 637 027587
✉ jenny@padovanibooks.com

CARDS, STATIONERY & CALENDARS

UK Stationery and Book orders will be supplied by Trade Counter

UK AGENTS (STATIONERY)

LONDON, MIDDLESEX
Cards, Stationery, Calendars
Jim Gregory
☎ 07968 084628
☎ 07973 777782
✉ anyonebutunited@hotmail.com
LONDON
Books and Calendars only
Dennis Segue
☎ 07973122973
✉ seg@globalnet.co.uk

SOUTH EAST
(excluding London postal codes)
Kent, Surrey, E. W. Sussex, Hampshire, Isle of Wight

Tony & Angela Shelton
Tony Shelton
☎ 07947 835196
Angela Shelton
☎ 07931 353880
✉ tony.shelton@virgin.net

SOUTH WEST
Devon, Cornwall, Somerset, Dorset, Channel Islands, Bath, Bristol, Wiltshire, Mid/South Wales
Neil Matthews
☎ 01803 310312
☎ 01803 310312
☎ 07801 756404
✉ seapigeon@ukonline.co.uk

EAST ANGLIA
Essex, Suffolk, Norfolk, Cambridgeshire, London-North Circular Road
John Greenland
☎ 01206 251025
☎ 01206 251025
☎ 07802 414388
✉ john.f.greenland@googlemail.com

HOME COUNTIES
Bedfordshire, Buckinghamshire, Hertfordshire, Oxfordshire, Berkshire
Terry Goodall
☎ 01252 844692
☎ 01252 842873
☎ 07973 164573
✉ terry.tom@virgin.net

EAST & WEST MIDLANDS
Warwickshire, Worcestershire, Herefordshire, Gloucestershire, West Midlands, Nottinghamshire, Lincolnshire, Northamptonshire, Leicestershire, South Derbyshire, South Staffordshire
Karen Ford
☎ 01234 871622
☎ 01234 870132
☎ 07971 810659
✉ karen.ford15@btinternet.com

THE NORTH
Cheshire, North Derbyshire, Lancashire, Gtr Manchester, Merseyside, North Staffordshire, North Wales, Shropshire, Yorkshire

Geoffrey & Rosalie Jacobs

☎ 0151 724 6986
☎ 0151 724 6986
☎ 07860 822057
✉ gjacobs@talktalk.net

SCOTLAND

Darran McBride
☎ 07971 796736
✉ darranmcbride@yahoo.co.uk

INTERNATIONAL DISTRIBUTION (STATIONERY)

AUSTRALIA

Cards, Stationery, Calendars
WATERLYN PTY LTD
Unit D7, 1 Campbell Parade
Manly Vale
NSW 2093 Australia
David Pursley
☎ +61 2 9948 4333
✉ sales@waterlyn.com.au
www.waterlyn.com.au

BELGIUM & THE NETHERLANDS

Cards, Stationery, Calendars
AGNI
Horststraat 49
2370 Arendonk
Belgium
Frederik & Mariska Van de Velde
☎ +32 (0)5163 3333
✉ info@agni.be
www.agni.be

BENELUX

Cards, Stationery, Calendars
DECADENCE NED BV
Steegstraat 24A
NL6041EA Roermond
The Netherlands
Geert Hoeberigs
☎ +31 475 331819
✉ info@thecardcompany.nl

CANADA

Cards, Stationery, Calendars
JANNEX ENTERPRISES LIMITED
280 Hillmount Road, Unit 7
Markham, ON
L6C 3A1
Marie Sullivan
☎ +1 905 284 8484
☎ +1 905 284 8485
✉ greetings@jannex.com
www.jannex.com

FINLAND

Cards, Stationery, Calendars
PUTINKI-TUKKU OY
Haementie 105 B
Helsinki, FIN 00550
Finland
Anu Hartonen
☎ +35 8 9773 2874
✉ info@putinki.fi

FRANCE

Cards, Stationery, Calendars
PATCHWORK
Cartes et Papeterie d'Art
Le Bourge
24640 Saint Eulalie d'Aut
France
Véronique Dabrowski
☎ +33 55351 7400
✉ patchwork2@wanadoo.fr

NEW ZEALAND Cards & Stationery

LIVE WIRES
8-10 Fitzherbert St Petone
Wellington
New Zealand
Helen Harvey
☎ +64 4 576 0055
✉ helen@livewires.co.nz
www.livewires.co.nz

NEW ZEALAND Books & Calendars

BECKETT BOOKS
PO Box 101265
98-100 Hillside Road
Wairau Valley
Auckland
New Zealand
Jill Beckett or Chris Beckett
☎ +64 9 442 4438
✉ jill@beckettbooks.co.nz
✉ chris@beckettbooks.co.nz
www.beckettbooks.co.nz

NORWAY

Cards, Stationery, Calendars
BACCARA A/S
Gramveien 66
N-1832 Askim
Norway
Alf Byman
☎ +47 69 88 8555/65
✉ baccara@baccara.no
www.baccara.no

SOUTH AFRICA

Cards, Stationery, Calendars
SG DISTRIBUTORS
PO Box 781021
Sandton Commercial Village
Cnr 15th Street & 7th Avenue
Eastgate Ext 18
South Africa
Giulietta Campanelli
☎ +27 (0) 11 444 9041/50
✉ giulietta@sgdistributors.co.za

SWEDEN

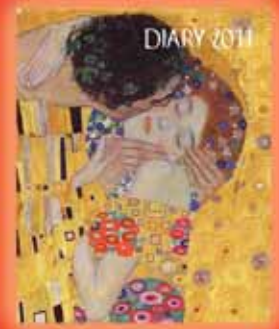
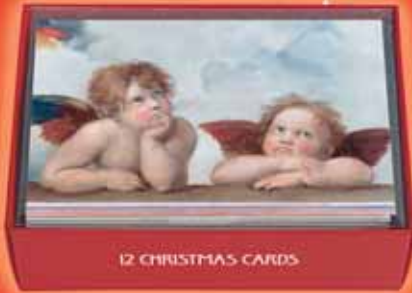
Cards, Stationery, Calendars
Q CARDS & CO AB
Box 26092
S-100 41 Stockholm
Sweden
Birgitta Murray
☎ +46 820 6000
☎ +46 707 7955 44
✉ info@qcards.se
www.qcards.se

SWITZERLAND

Cards, Stationery, Calendars
HAPPY TRADE
Klosterstrasse 40
CH-5430
Wettingen
Philipp Winiger
☎ +41 564 270 151
✉ happytrade@dplanet.ch

USA

Cards, Stationery, Calendars
HARTMAN CARDS
844 N. Lenola Road, Unit 5
Moorestown, NJ 08057
Lou Hartman
☎ +1 800 878 4555
✉ hartmancards@aol.com
www.hartmancards.com



FLAME TREE PUBLISHING

Crabtree Hall, Crabtree Lane, Fulham, London SW6 6TY, United Kingdom

Tel: + 44 (0)84 5402 0422 Fax: + 44 (0)20 7386 4701

Email: sales@flametrepublishing.com Website: www.flametrepublishing.com

FLAME TREE PUBLISHING is part of THE FOUNDRY CREATIVE MEDIA COMPANY LTD. www.foundry.co.uk